

Latitude 14 3488

3000 Series

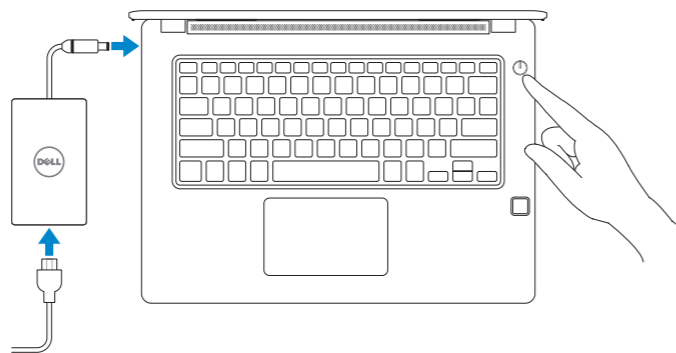
Quick Start Guide

快速入门指南



1 Connect the power adapter and press the power button

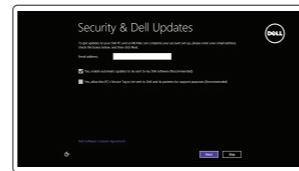
连接电源适配器并按下电源按钮



2 Finish operating system setup

完成操作系统设置

Windows 8.1



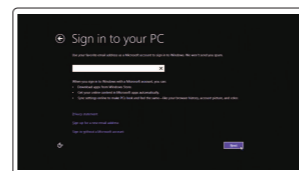
Enable security and updates
启用安全和更新



Connect to your network
连接到网络

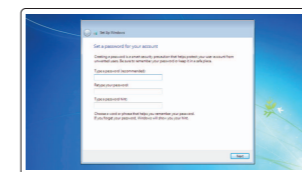
NOTE: If you are connecting to a secured wireless network, enter the password for the wireless network access when prompted.

注：如果您要连接加密的无线网络，请在提示时输入访问该无线网络所需的密码。

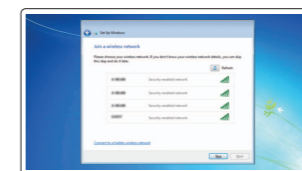


Sign in to your Microsoft account or create a local account
登录您的 Microsoft 帐户或创建本地帐户

Windows 7



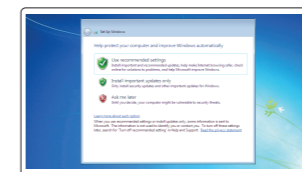
Set a password for Windows
设置 Windows 密码



Connect to your network
连接到网络

NOTE: If you are connecting to a secured wireless network, enter the password for the wireless network access when prompted.

注：如果您要连接加密的无线网络，请在提示时输入访问该无线网络所需的密码。



Protect your computer
保护您的计算机

Ubuntu

Follow the instructions on the screen to finish setup.
按照屏幕上的说明完成设置。

Locate Dell apps in Windows 8.1

在 Windows 8.1 中查找 Dell 应用程序



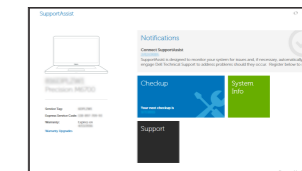
Dell Backup and Recovery Backup, recover, repair, or restore your computer
备份、恢复、修复或还原您的计算机



Dell Data Protection | Protected Workspace Protect your computer and data from advanced malware attacks
保护您的计算机和数据免受高级恶意软件攻击



SupportAssist Check and update your computer
检查和更新您的计算机



Product support and manuals

产品支持和手册

Dell.com/support

Dell.com/support/manuals

Dell.com/support/windows

Dell.com/support/linux

Dell.com/contactdell

Dell.com/regulatory_compliance

P79G

P79G001

Latitude 14-3488

Latitude 14-3488 系列

Contact Dell

与 Dell 联络

Regulatory and safety

管制和安全

Regulatory model

管制型号

Regulatory type

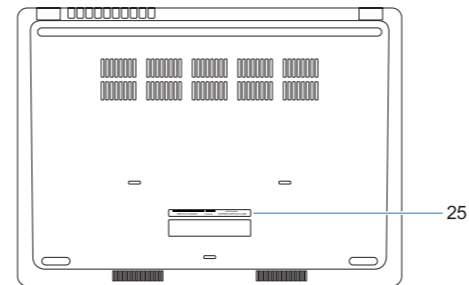
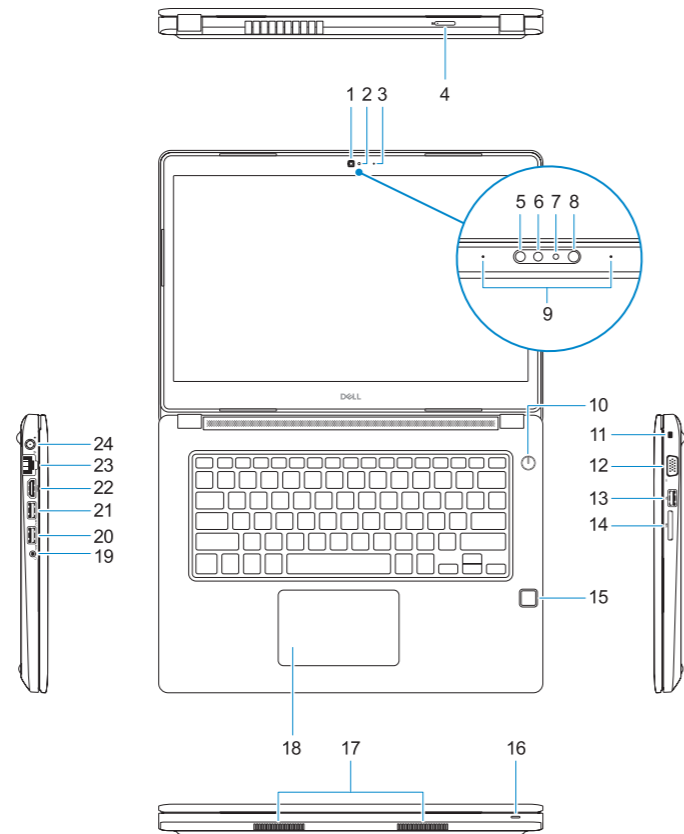
管制类型

Computer model

计算机型号

Features

功能部件



- | | | | |
|---|-----------------------------------|---------------------|-------------------------------|
| 1. Camera | 15. Fingerprint reader (optional) | 1. 摄像头 | 16. 状态指示灯 |
| 2. Camera status light | 16. Status light | 2. 摄像头状态指示灯 | 17. 扬声器 |
| 3. Microphone | 17. Speakers | 3. 麦克风 | 18. 触摸板 |
| 4. SIM card slot (optional) | 18. Touchpad | 4. SIM 卡槽 (可选) | 19. 耳机/麦克风组合插孔 |
| 5. Infrared camera (Touch version only) | 19. Headset/microphone combo jack | 5. 红外摄像头 (仅限触摸版) | 20. USB 3.0 端口 |
| 6. Infrared emitter (Touch version only) | 20. USB 3.0 port | 6. 红外发射器 (仅限触摸版) | 21. USB 3.0 端口 (带 PowerShare) |
| 7. Camera status light (Touch version only) | 21. USB 3.0 port with PowerShare | 7. 摄像头状态指示灯 (仅限触摸版) | 22. HDMI 端口 |
| 8. Camera (Touch version only) | 22. HDMI port | 8. 摄像头 (仅限触摸版) | 23. 网络端口 |
| 9. Microphones (Touch version only) | 23. Network port | 9. 麦克风 (仅限触摸版) | 24. 电源适配器端口 |
| 10. Power button | 24. Power adapter port | 10. 电源按钮 | 25. 服务标签 |
| 11. Noble Wedge security cable slot | 25. Service Tag label | 11. Noble 楔形安全电缆插槽 | |
| 12. VGA port | | 12. VGA 端口 | |
| 13. USB 2.0 port | | 13. USB 2.0 端口 | |
| 14. Memory card reader | | 14. 内存卡读取器 | |
| | | 15. 指纹读取器 (可选) | |

